

# Targeted Protein Degraders

An early mover in the targeted protein degradation (TPD) space, WuXi AppTec has developed partnerships with multiple TPD players since 2016. We look forward to supporting your TPD project.

## Proven Synthetic Experiences

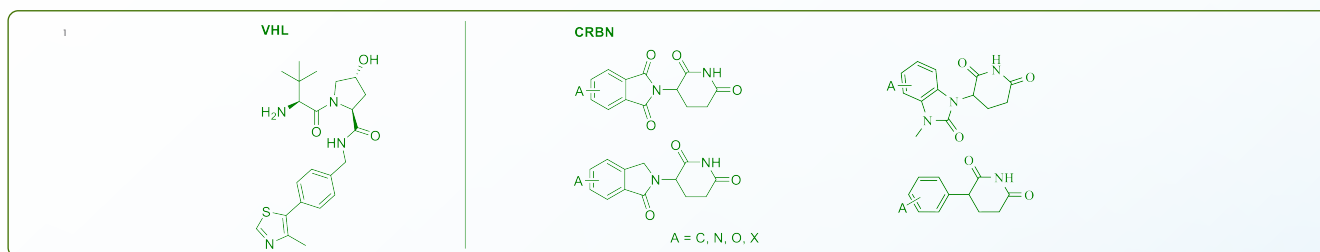
- **188,000+** compounds synthesized
- **1,000+** experienced chemists
- **150+** clients/collaborations
- **100+** novel E3 ligase ligands achieved
- **300+** novel linkers achieved
- **300+** ADC linkers available for DAC modality
- Custom delivery from mg to multi-kg

## Leading Analytical Capabilities

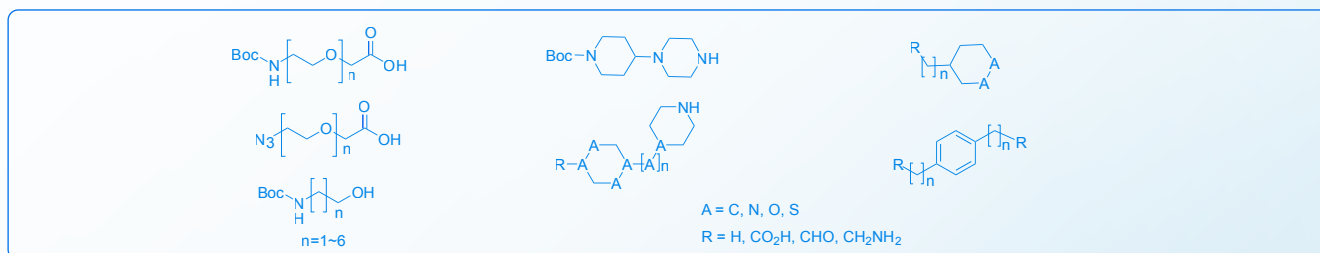
- **75** dedicated separation chemists
- **200+** methods for prep-HPLC and chiral-SFC
- Diversified techniques (RP-HPLC; NP-HPLC; SFC)
- Various columns and modifiers available
- Innovative online dilution system designed for PROTACs
- Native-MS analysis for ternary complex confirmation
- Proteomics studies to identify off-target effect

## Well-Established Modular System

**E3 ligase ligands:** Common ligands are readily available, e.g. VHL, CRBN, etc.



**Linkers:** Most frequently used linkers, e.g. PEG, alkyl, "clickable", rigid, etc.



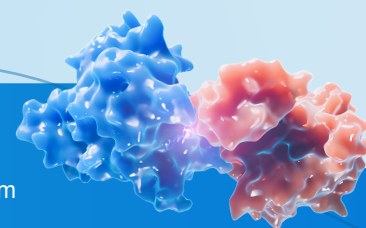
PROTAC : Proteolysis Targeting Chimeras



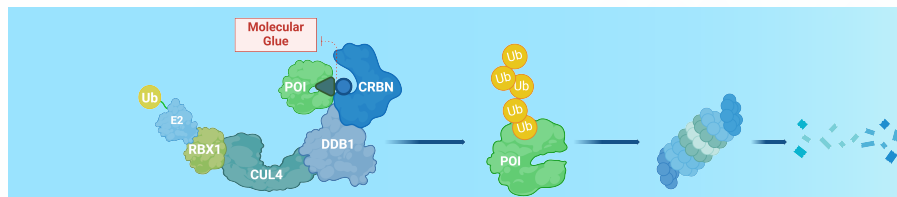
## Contact us

 <https://rcs.wuxiapptec.com>

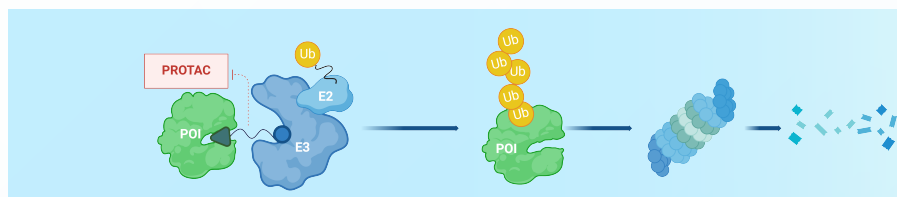
 [chemistry\\_service@wuxiapptec.com](mailto:chemistry_service@wuxiapptec.com)



## Experience with TPD Technologies



Molecular glue



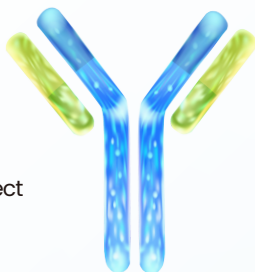
PROTAC

## Emerging New TPD Technology: Degradant-Antibody Conjugate (DAC)

### Antibody

#### • High Specificity

minimize off-target effect  
low immunogenicity



### Attachment

- **Cysteine**  
(even stoichiometry)
- **Lysine**  
(different stoichiometry)

### Linker

- **Cleavable**  
lysosomal protease sensitive  
acid sensitive  
glutathione sensitive
- **Non-cleavable**

### Payload/PROTACs

Highly potent small molecule toxin  
vs  
large and lipophilic degrader

## DAC Precursor: Degradant with Cleavable Linker

